



DECORATIVE STONE
CATALOGUE

ROYAL 
STONES

TABLE OF CONTENTS

LEDGE/COBBLE STONE 4-7

LEDGE STONE..... 8-9

COBBLE STONE..... 10-11

RIDGE STONE..... 12-13

LIME STONE 14-15

FIELD STONE..... 16-17

NEWPORT 18-19

OTHER COMBINATIONS.....20

ACCESSORIES.....21

INSTALLATION 22-25

TECHNICAL SPECIFICATIONS..... 26-27

ROYAL STONE

Royal Stone offers a wide range of quality decorative stones intended for both indoor and outdoor use. Manufactured in Quebec in our ultramodern facilities, our stones replicate – in all respects – the look and appearance of renowned artisanal stones at a lower cost than natural stone.

Our superior manufacturing technology allows us to obtain reliable colouring and a consistent result while respecting the strictest standards. In addition, our products have excellent resistance to the freeze/thaw cycles typical of the harshest climates. Their integral structure ranks them among the best in the industry, which is why we offer a 50-year manufacturer’s warranty.

No matter what type of project you have in mind, the Royal Stone team will be able to help you get it done. Our professionals can explain the characteristics of the products in detail, as well as their most common uses and the type of installation required, while taking your specific needs and design features into account.

DECORATIVE STONE

Our decorative stones are ideal for new construction or renovations and decoration projects. Their shape and texture perfectly imitate natural stone, while our manual colouring technique gives them an even more natural finish.

Requiring no foundation, all our stones can be installed on any solid wall surface without modifying its structure.

You just have to choose the model that best suits your needs from among our impressive selection that adapts to all styles, from the most modern to the most rustic.



Ledge/Cobble Stone - Telluride

LEDGE/COBBLE STONE

Combining the linear aspect of Ledge Stone with the more rustic look of Cobble Stone, this is an excellent option for creating a warm and inviting space. Lending it self to both a contemporary or rustic decor.



Aspen



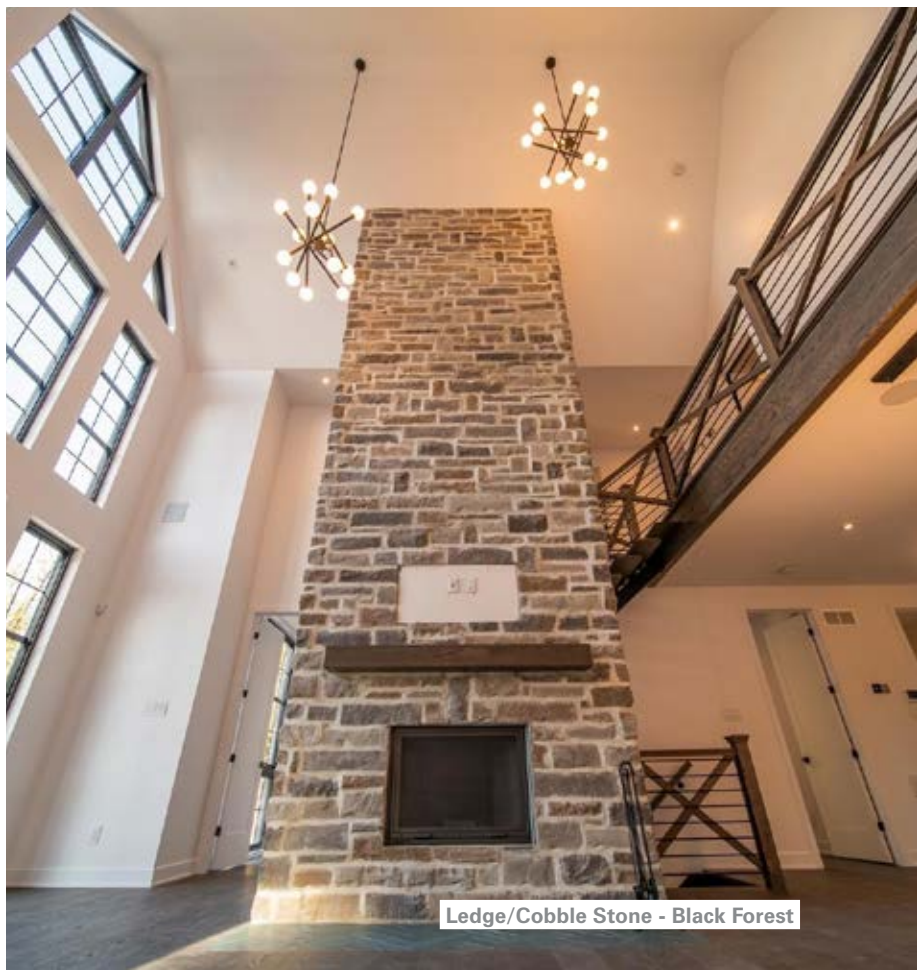
Bala



Black Forest



Ash



Ledge/Cobble Stone - Black Forest



Everest



Walnut



Silverstone



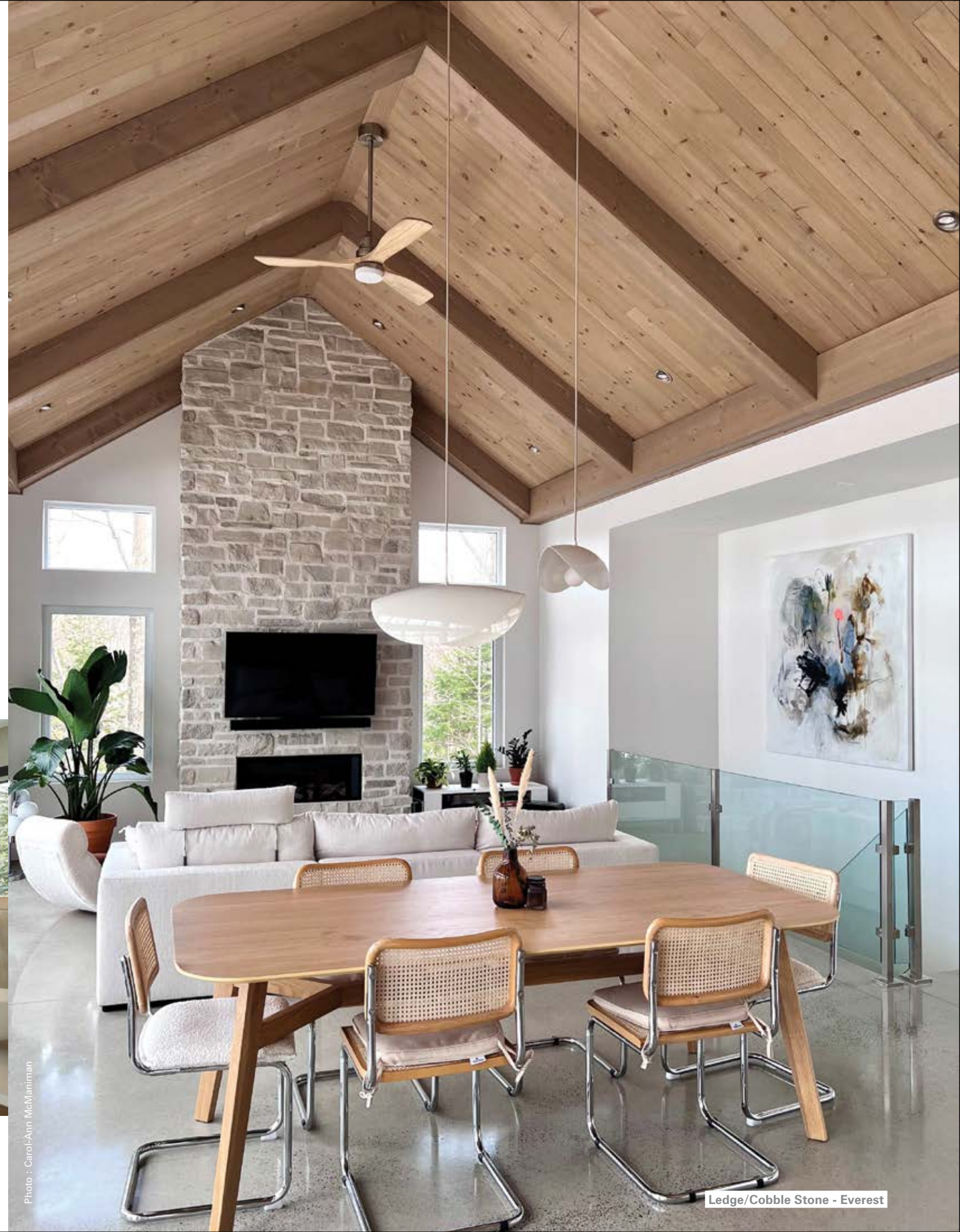
Telluride



Titanium



Ledge/Cobble Stone - Ash



Ledge/Cobble Stone - Everest



Ledge Stone - Bala

LEDGE STONE

This contemporary stone is offered in a wide range of colours. It gives your projects a modern look while adding a touch of tradition to them.



Bala



Ash



Graphite



Walnut



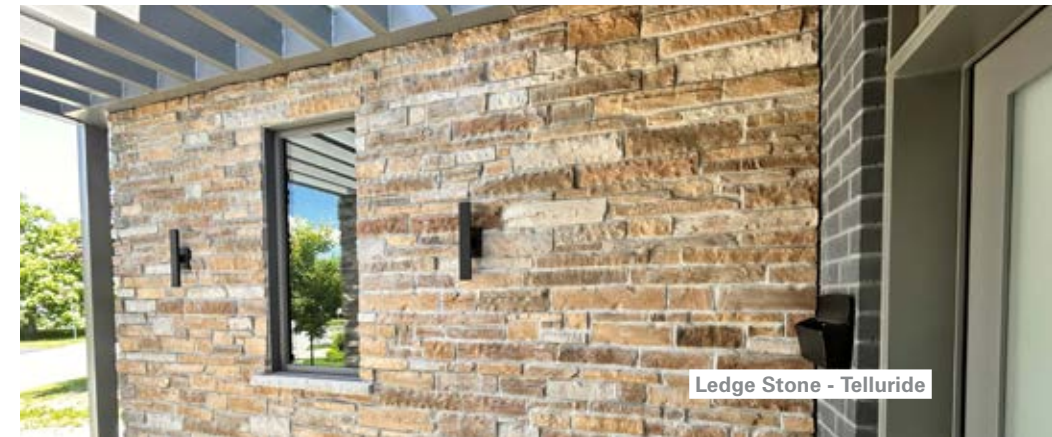
Silverstone



Telluride



Titanium



Ledge Stone - Telluride



Cobble Stone - Black Forest

COBBLE STONE

Cobble Stone will enhance your rustic decor thanks to its natural look and its warm colours. A great way to breathe some rustic spirit into your home.



Aspen



Black Forest



Ash



Everest



Walnut



Telluride



Ridge Stone - Monaco

RIDGE STONE

Definitely contemporary, Ridge Stone symbolise modernity and refinement. With is straight lines, its smooth textures and facade of its wide choices of shades, it fits perfectly with current decor trends.



Ash



Everest



Graphite



Monaco



Ridge Stone - Ash

LIME STONE

Here's a stone that's very versatile. Used to create a rustic atmosphere or a contemporary look, it will bring warmth and elegance to your space.



Bala



Ash



Walnut



Silverstone



Titanium





Field Stone - Black Forest

FIELD STONE

Field Stone is a perfect partner for modern cottages. With its rustic look, it blends in with a contemporary design to create an inviting cabin.



Black Forest



Ash



Everest



Walnut



Telluride



Field Stone - Telluride



NEWPORT

Definitively contemporary, Newport stone embodies modern style in its purest form. This stone enables shops and residences to take on a distinguished modern look.



Black Rundle



Ash



Everest



Graphite



Titanium

NEWPORT INTERLOCKING FLAT CORNER (See page 27)



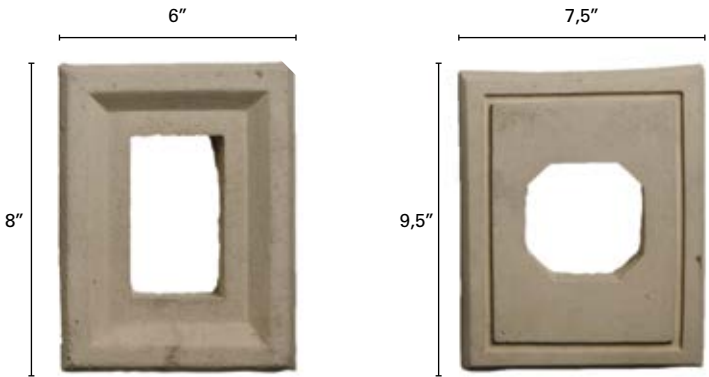
OTHER COMBINATIONS

Yes, it's definitely possible to combine certain products to create successful accent effects. Ledge Stone, Cobble Stone, and Field Stone products can be mixed and matched during installation (sold separately). You just have to determine their ratio when ordering.



ACCESSORIES

Paired with our range of stones, the accessories we offer suit the specifics of your projects. These are commonly used pieces that will let you complete your creations seamlessly, without leaving any detail to chance.



Stone for electrical outlets

Stone for lights



Vena Sill

ALL ACCESSORIES ARE AVAILABLE IN 3 COLOURS.



1) Charcoal - 2) Iron - 3) Cream



INSTALLATION

The installation specifications for Royal Stone products vary according to the product, surface used, and whether they are installed indoors or outdoors. Products must be glued onto a sound and solid surface at all times. In order for the warranty to remain valid, our installation recommendations must be followed. Warranty applies to the product, not installation. The masonry contractor can provide you with an installation warranty.

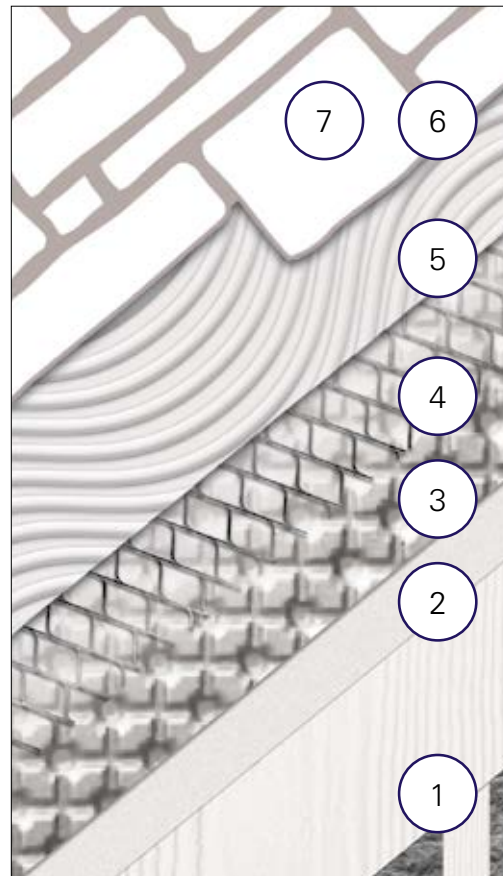
INDOOR OR OUTDOOR INSTALLATION ON PLYWOOD PANELLING*

- 1) Rigid panel (plywood*) attached to the framework, air space, and insulation
- 2) Water-resistant weatherproofing
- 3) 10 mm air space or rain screen application**
- 4) 2.5 lbs galvanized metal lath
- 5) Pre-blended polymer mortar
- 6) Royal Stone
- 7) Use type-N mortar for joints, if applicable

** Use exterior grade plywood.*

*** Recommended for exterior installation only.*

See our installation guides on our website (under "Installation"):
lespierresroyales.com/en/installation/.



With hollow mortar joint



With wide rustic joint



Without mortar joint



Ledge/Cobble Stone - Ash

INSTALLATION

EXTERIOR INTERIOR INSTALLATION ON CEMENT BOARD (A)

- 1) Studded at 16 inches center or rain screen application
- 2) Cement board (Permabase-Durock)
- 3) 2.5 lbs galvanized metal lath
- 4) Pre-blend polymer mortar
- 5) Royal Stones
- 6) Type N mortar

EXTERIOR INSTALLATION ON PLYWOOD (B)

- 1) Studded at 16 inches
- 2) Plywood
- 3) Roof felt #15
- 3) 2.5 lbs galvanized metal lath
- 5) Pre-blend polymer mortar
- 6) Royal Stones
- 7) Type N mortar

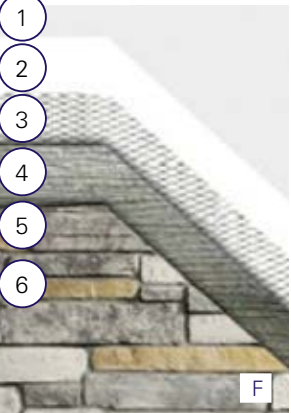
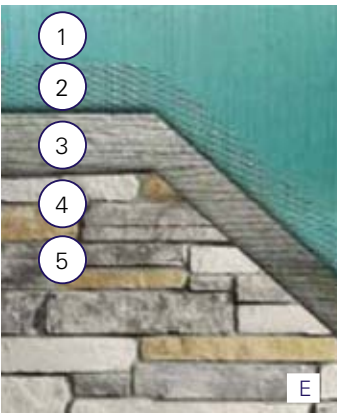
EXTERIOR INSTALLATION ON WOOD FRAMING (C)

- 1) Studded at 45° center/center at 8 inches
- 2) Roof felt #15
- 3) 2.5 lbs galvanized metal lath
- 4) Pre-blend polymer mortar
- 5) Royal Stones
- 6) Type N mortar

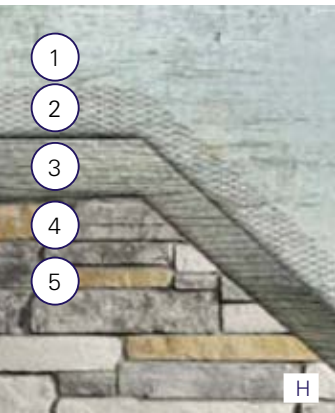
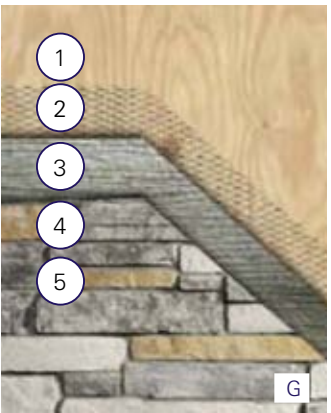
EXTERIOR INSTALLATION ON CONCRETE FOUNDATION (D)

- 1) Concrete foundation
- 2) 2.5 lbs galvanized metal lath
- 3) Pre-blend polymer mortar
- 4) Royal Stones
- 5) Type N mortar

EXTERIOR



INTERIOR



EXTERIOR INSTALLATION ON INSULATED CONCRETE FORMS (E)

- 1) Insulated concrete forms
- 2) 2.5 lbs galvanized metal lath
- 3) Pre-blend polymer mortar
- 4) Royal Stones
- 5) Type N mortar

INTERIOR INSTALLATION ON GYPROC (F)

- 1) Gyproc
- 2) Primer
- 3) 2.5 lbs galvanized metal lath
- 4) Pre-blend polymer mortar
- 5) Royal Stones
- 6) Type N mortar

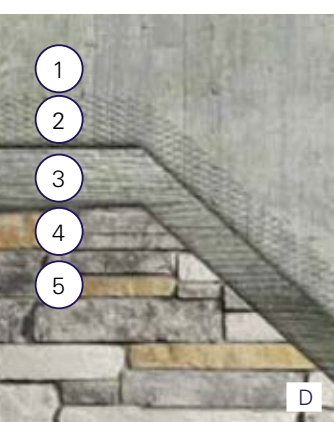
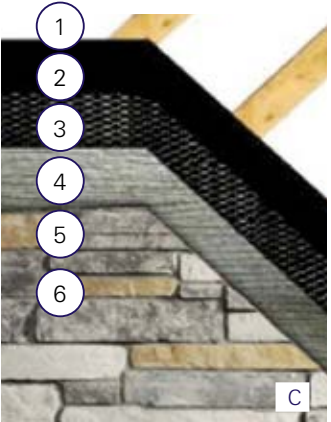
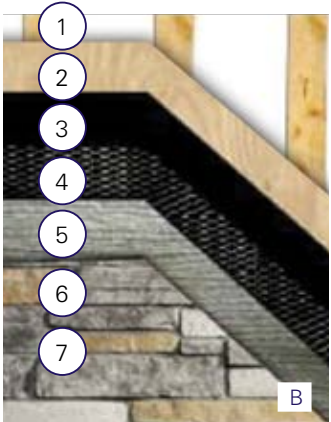
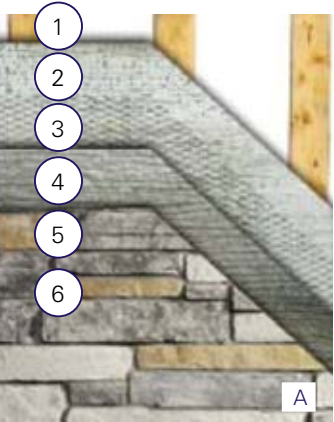
INTERIOR INSTALLATION ON PLYWOOD (G)

- 1) Plywood
- 2) 2.5 lbs galvanized metal lath
- 3) Pre-blend polymer mortar
- 4) Royal Stones
- 5) Type N mortar

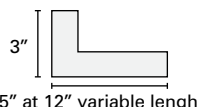

INTERIOR INSTALLATION ON CEMENT BOARD (H)

- 1) Cement board (Permabase-Durock)
- 2) 2.5 lbs galvanized metal lath
- 3) Pre-blend polymer mortar
- 4) Royal Stones
- 5) Type N mortar

EXTERIOR



TECHNICAL SPECIFICATIONS

Page	Products	Height	Length	Thickness	Mortar joint	Coverage in lin.ft.	Coverage in sq.ft.	Corner	Colors
4	LEDGE/COBBLE STONE The proportion of the two models mixed is 70% Ledge Stone + 30% Cobble Stone.	Depending on ratio 1" to 8"	Depending on ratio 6" to 22"	1" to 2.25"	WITH OR WITHOUT	1 lin.ft. =	3/4 sq.ft.		Aspen,Bala, Black Forest, Ash, Everest, Walnut, Silverstone, Telluride, Titanium
8	LEDGE STONE	1" to 4"	6" to 22"	1" to 2.25"	WITH OR WITHOUT	1 lin.ft. =	3/4 sq.ft.		Bala, Ash, Graphite, Walnut, Silverstone, Telluride, Titanium
10	COBBLE STONE	3" to 8"	4" to 22"	1" to 2.25"	WITH OR WITHOUT	1 lin.ft. =	3/4 sq.ft.		Aspen, Black Forest, Ash, Everest, Walnut, Telluride
12	RIDGE STONE	2.125" 3.5" 6"	8" 14" 22.5"	1" to 1.75"	WITH	1 lin.ft. =	3/4 sq.ft.		Ash, Everest, Graphite, Monaco
14	LIME STONE	2" to 12"	2.25" 3.5" 4.75" 7.5" 11.5"	1" to 2"	WITH OR WITHOUT	1 lin.ft. =	3/4 sq.ft.		Bala, Ash, Walnut, Silverstone, Titanium
16	FIELD STONE	Diameter 3" X 3" to 16" X 20"		1" to 3"	WITH	1 lin.ft. =	3/4 sq.ft.		Black Forest, Ash, Everest, Walnut, Platinum, Telluride
18	NEWPORT *	5"	22.5" 13' 9.5"	1" to 1.75"	WITHOUT	1 lin.ft. =	1 sq.ft.		Black Rundle, Ash, Everest, Graphite, Titanium

* Indoor installation recommended. Please refer to the manufacturer for outdoor installation.

The detail and the texture of each stone faithfully reflect those of natural stone. Within a 100 square-foot area, where the weight varies from10 to 12 pounds per square foot. You can also combine different models (Ledge, Cobble, Field, etc.) to create a unique pattern.

All products come with a 50-year limited warranty when installed according to manufacturers specifications. Product can be installed both indoors and outdoors.

The colour samples presented in this brochure are not exact, it is always recommended that a sample be viewed before ordering. Custom colors are available, please see retailers for details. To view a list of our retailers and for more information about the different types of installation based on the surfaces, please visit our website **royalstones.ca**.

The colour of the products presented in this brochure may differ from the actual colors of the product.
For all products, a loss percentage of 5-10% can be considered, depending on the project. For the installation of Ledge, Cobble, Ledge/Cobble and Lime without mortar joint, allow 12% more of a loss.



Ledge/Cobble Stone - Everest



ROYAL
STONES
royalstones.ca