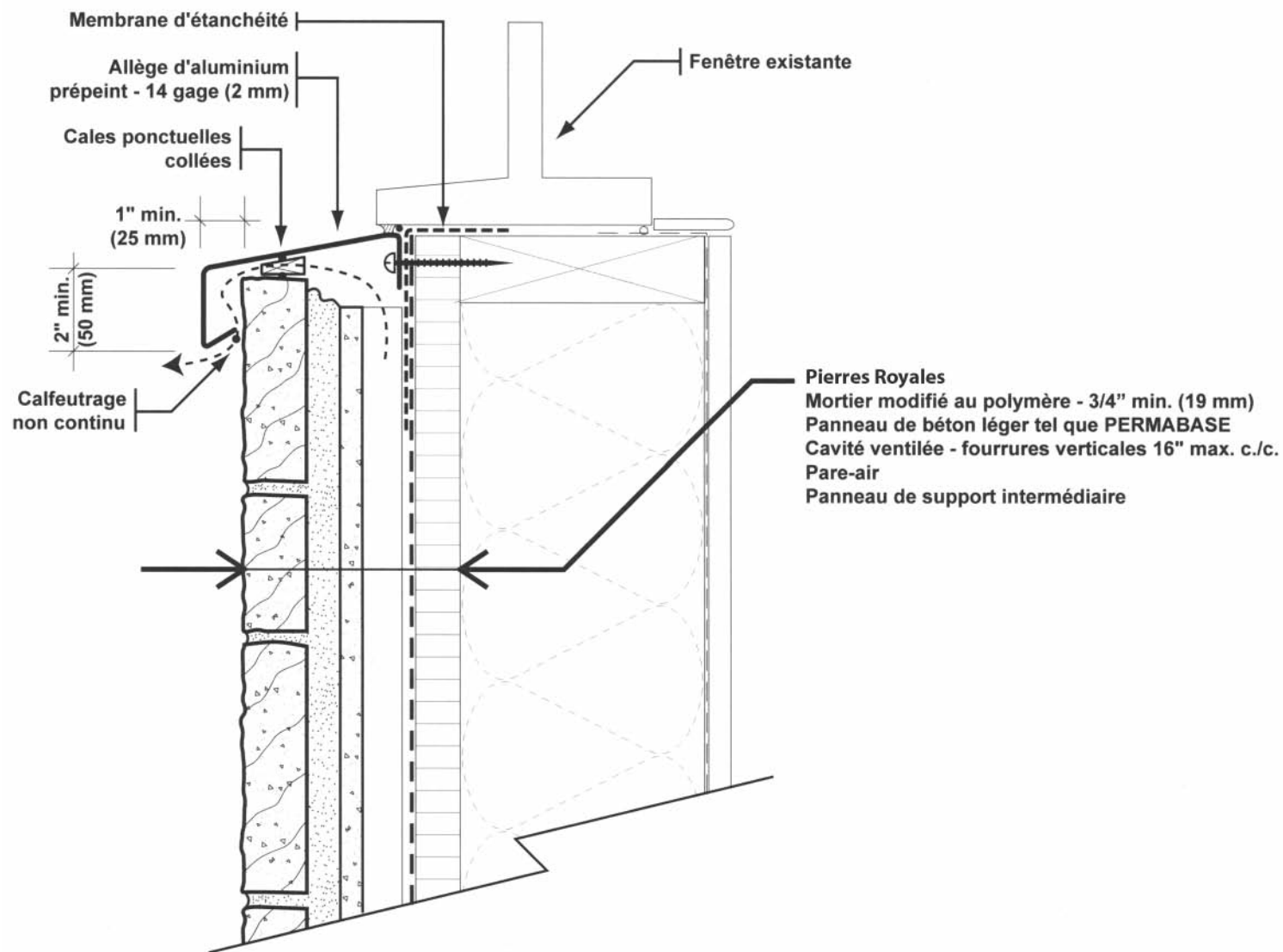
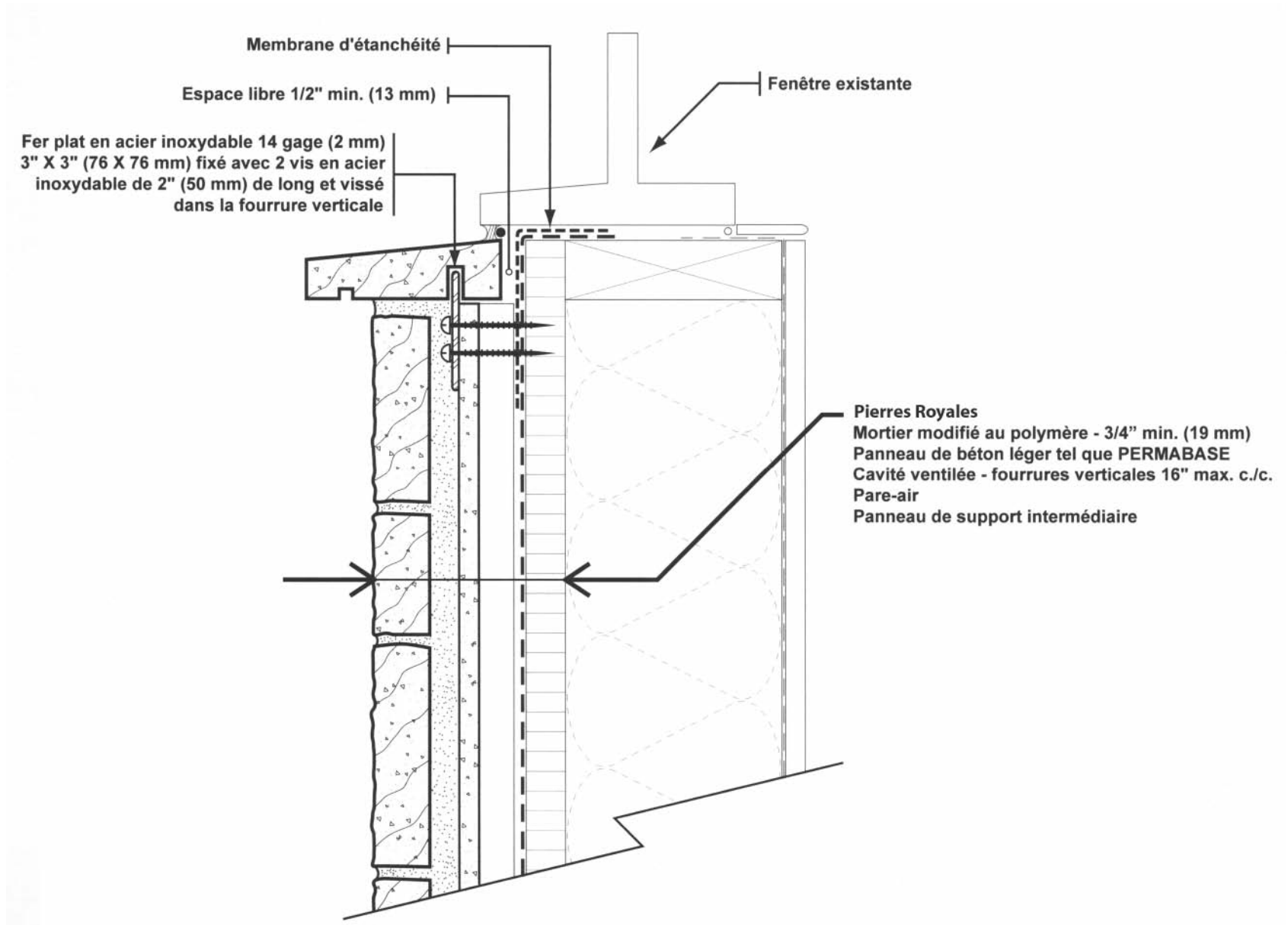


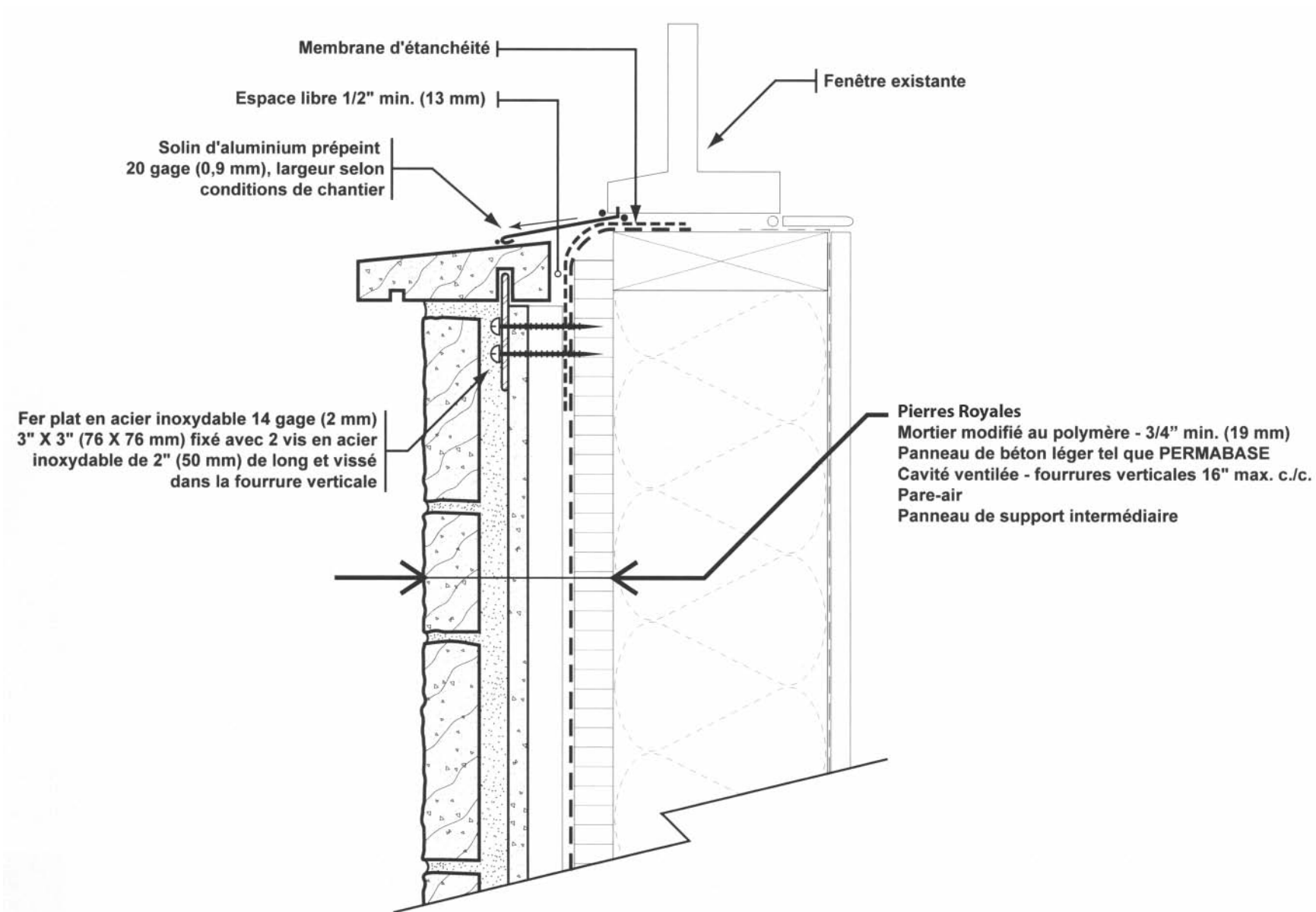
# SEUIL DE FENÊTRE - ALLÈGE D'ALUMINIUM



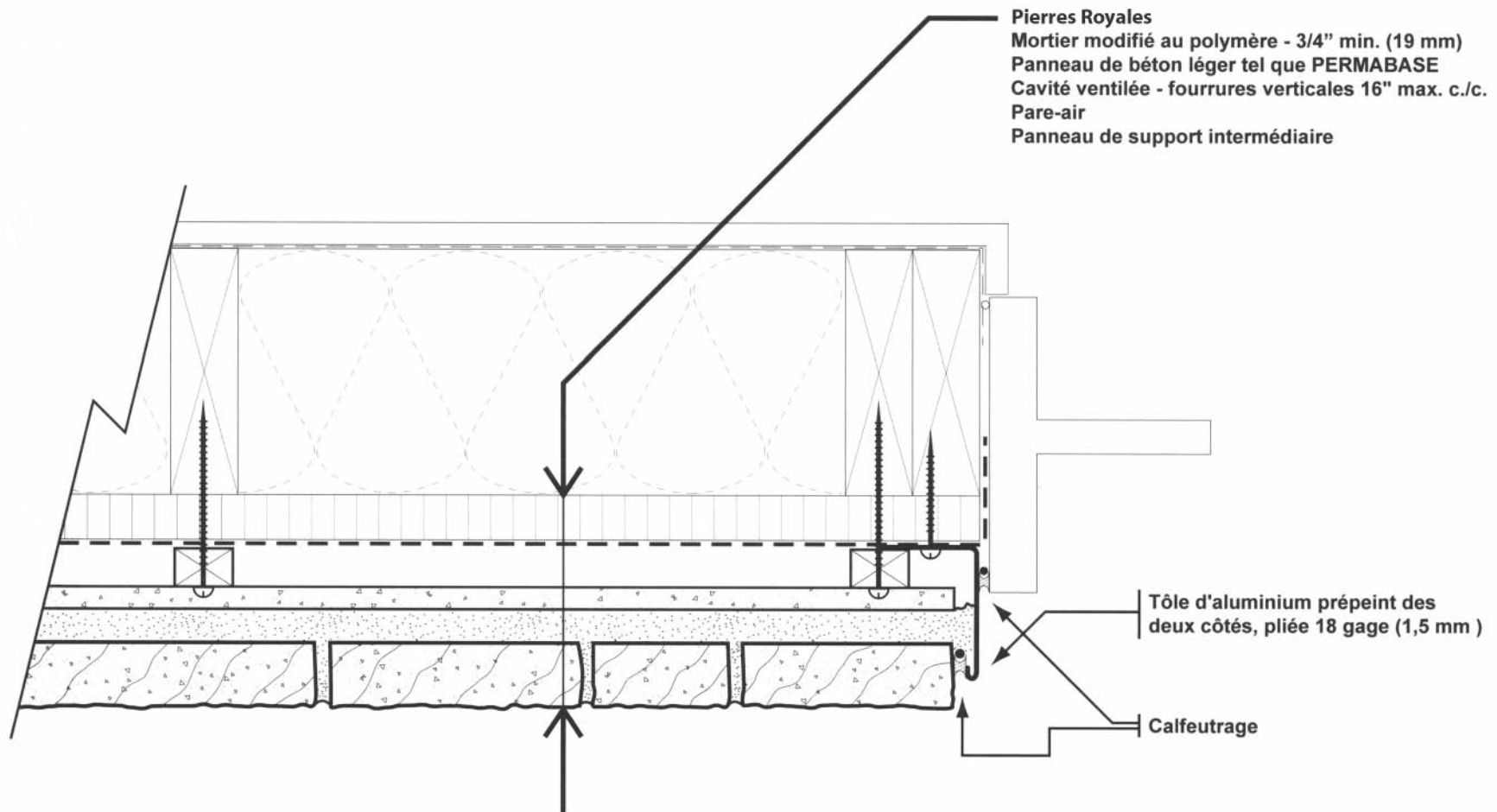
# SEUIL DE FENÊTRE - ALLÈGE DE PIERRE



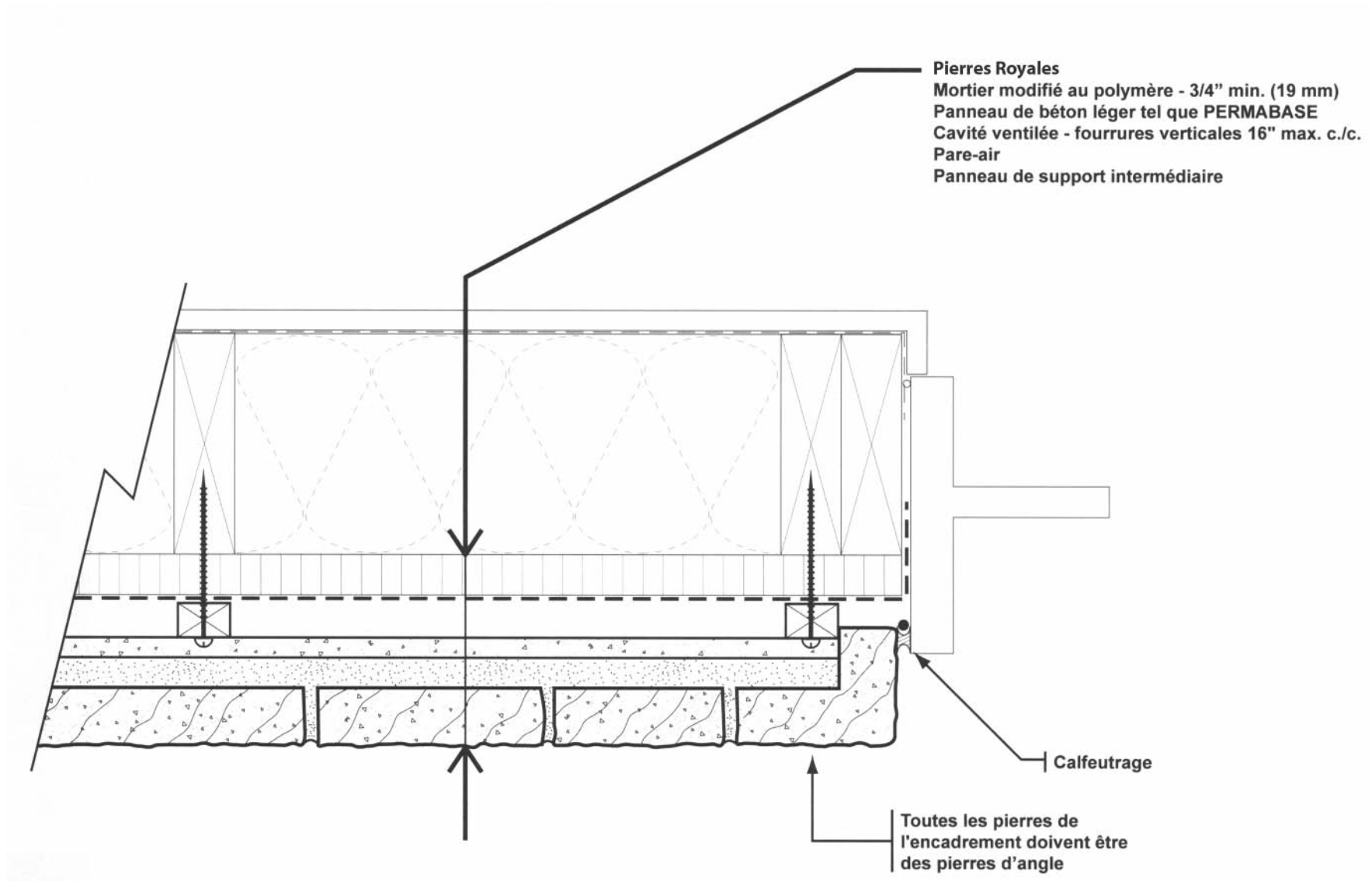
# SEUIL DE FENÊTRE - ALLÈGE DE PIERRE, RÉNOVATION



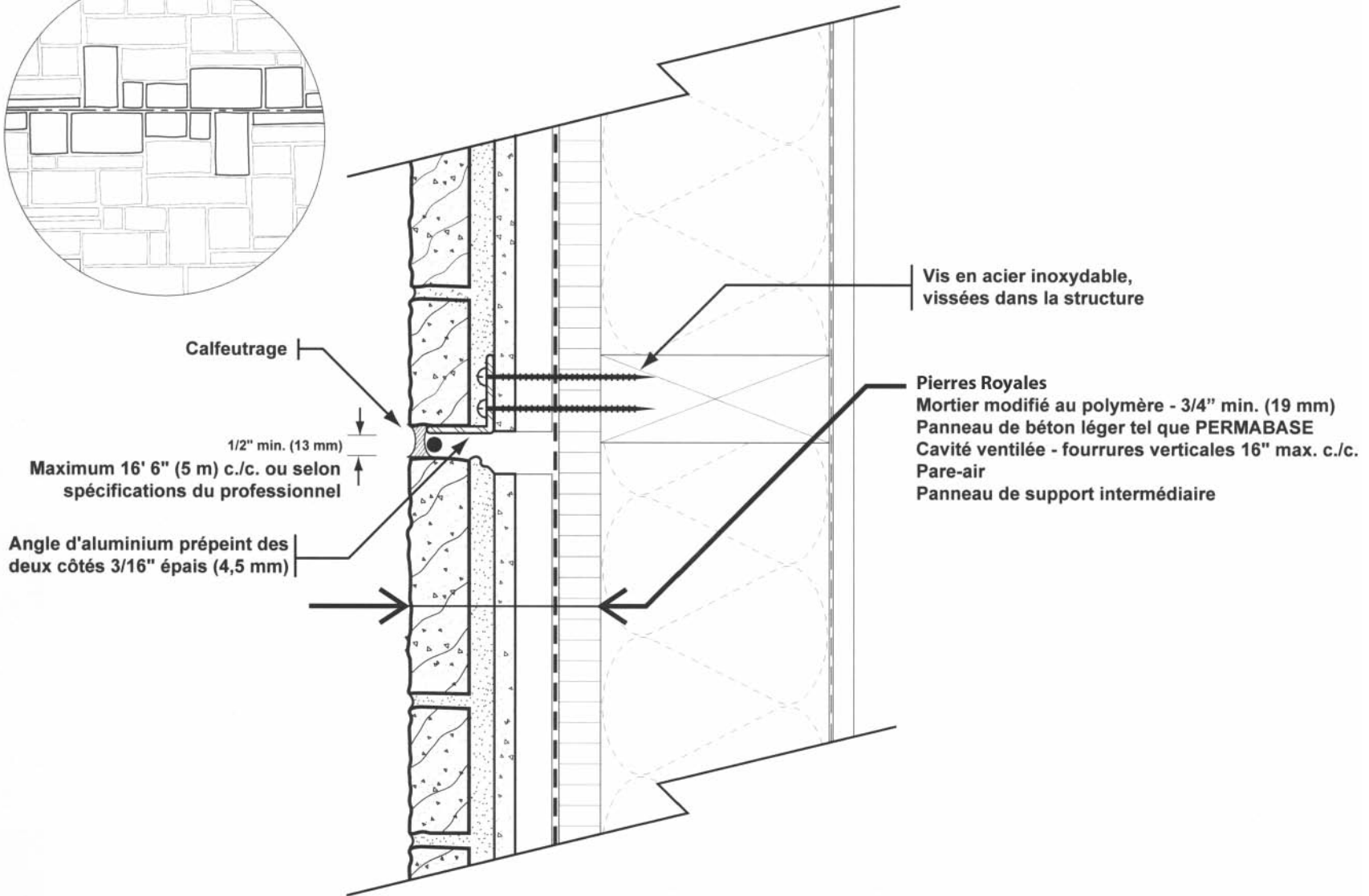
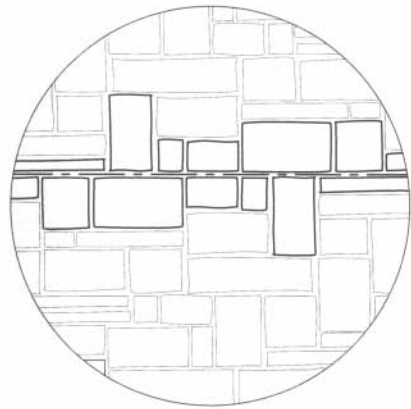
# JAMBAGE DE FENÊTRE - ANGLE D'ALUMINIUM



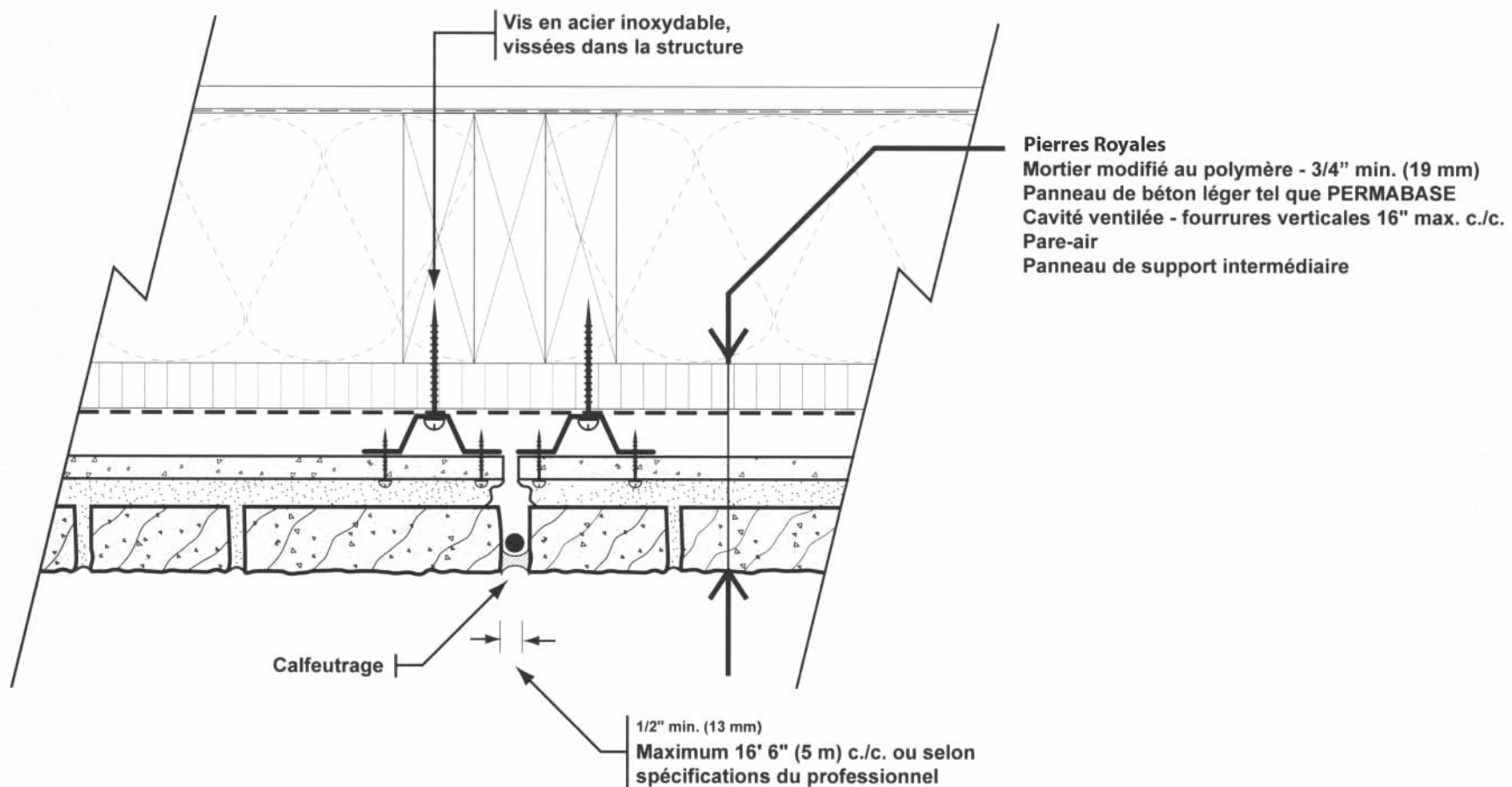
# JAMBAGE DE FENÊTRE - ANGLE DE PIERRE



# JOINT D'EXPANSION - HORIZONTAL

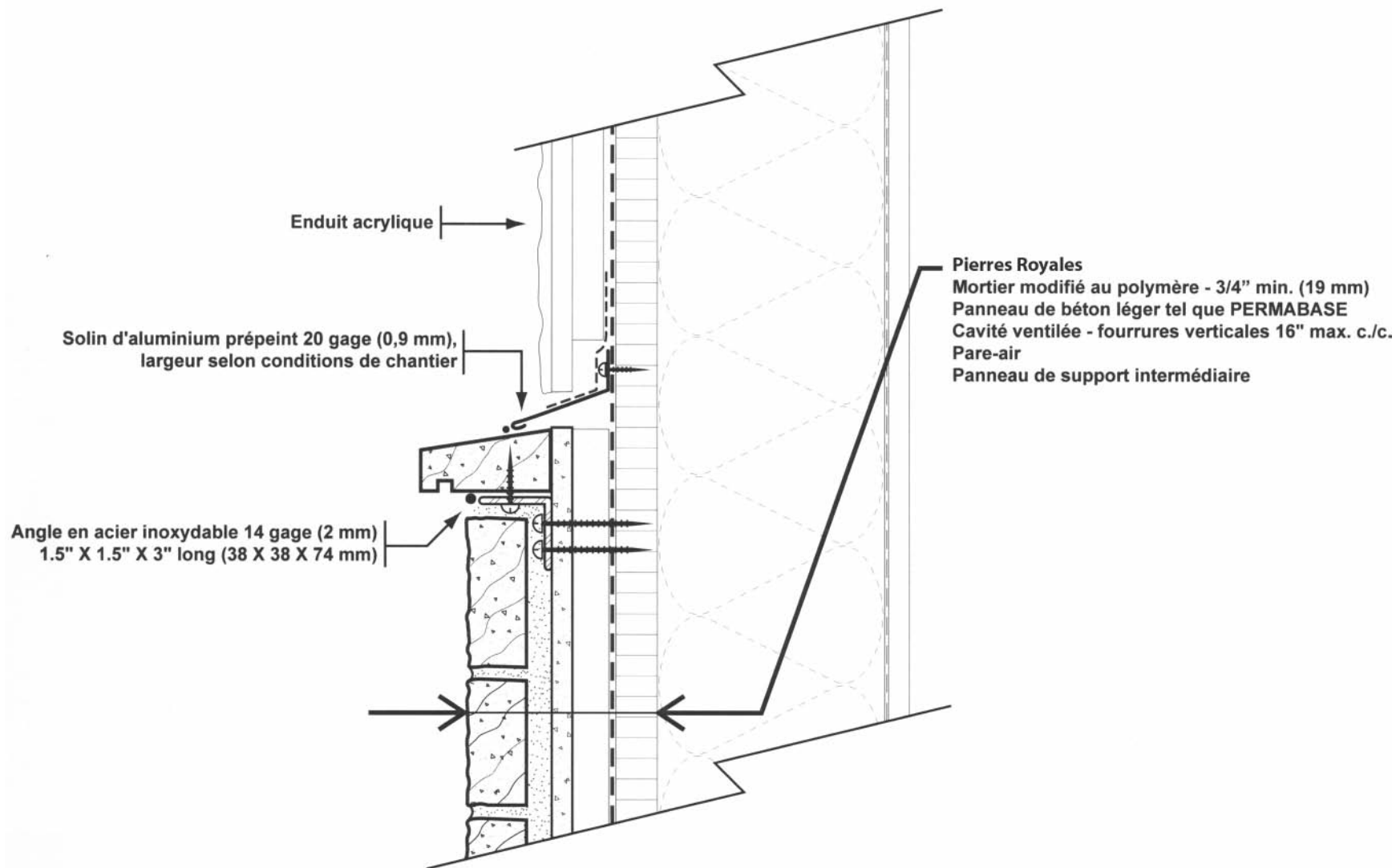


# JOINT D'EXPANSION - VERTICAL



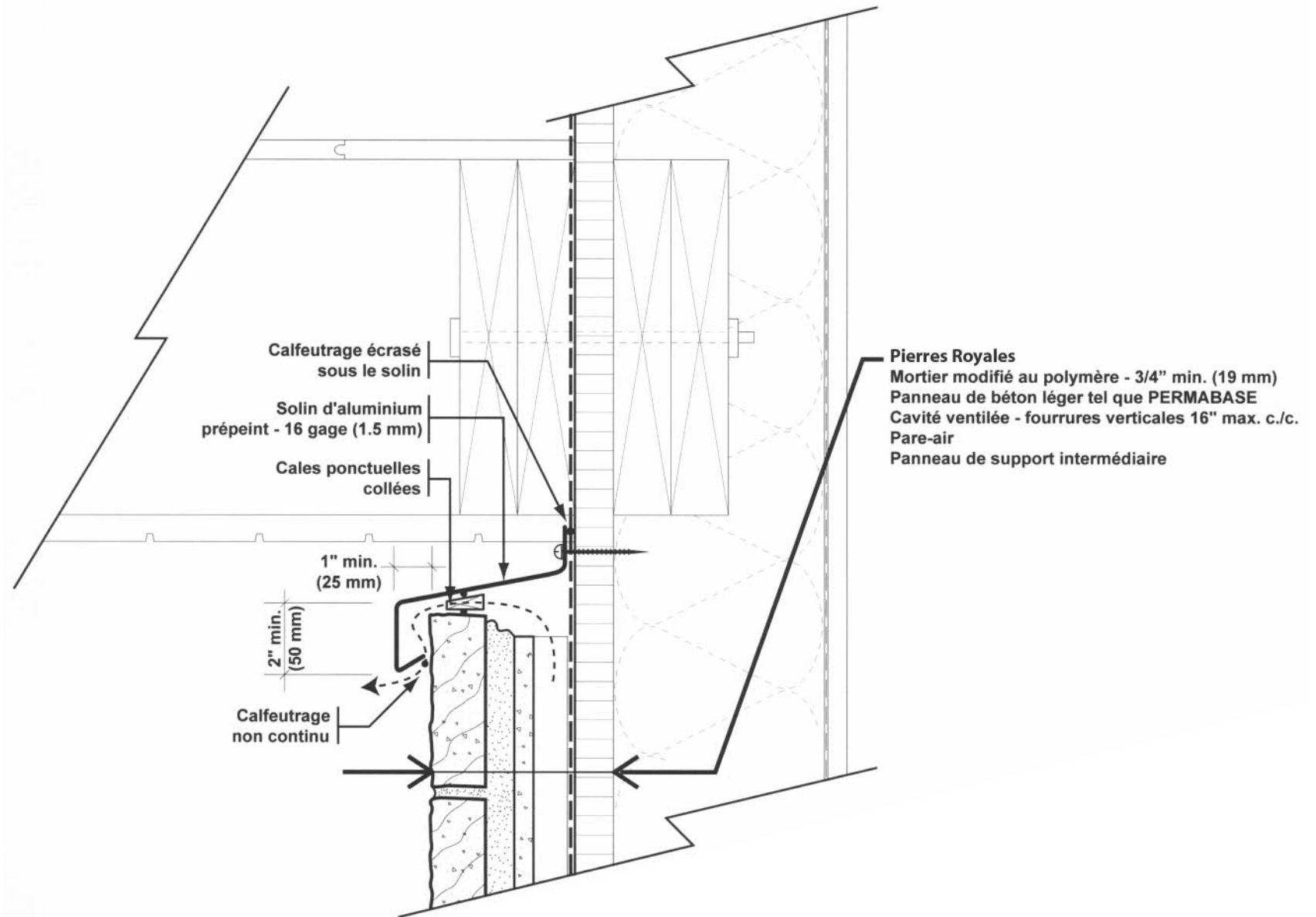


# JONCTION HORIZONTALE - SOLIN DE PIERRE 3"

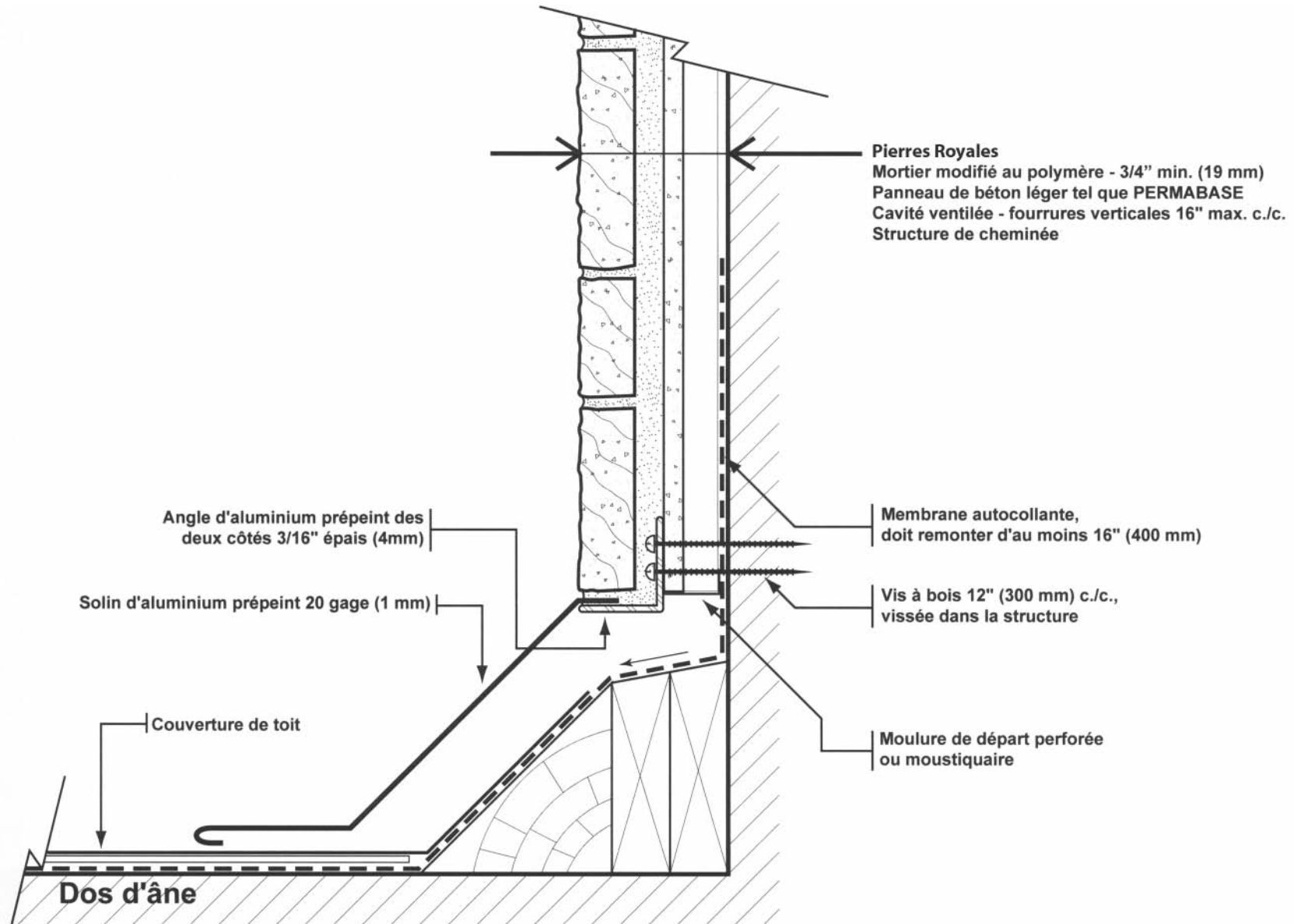




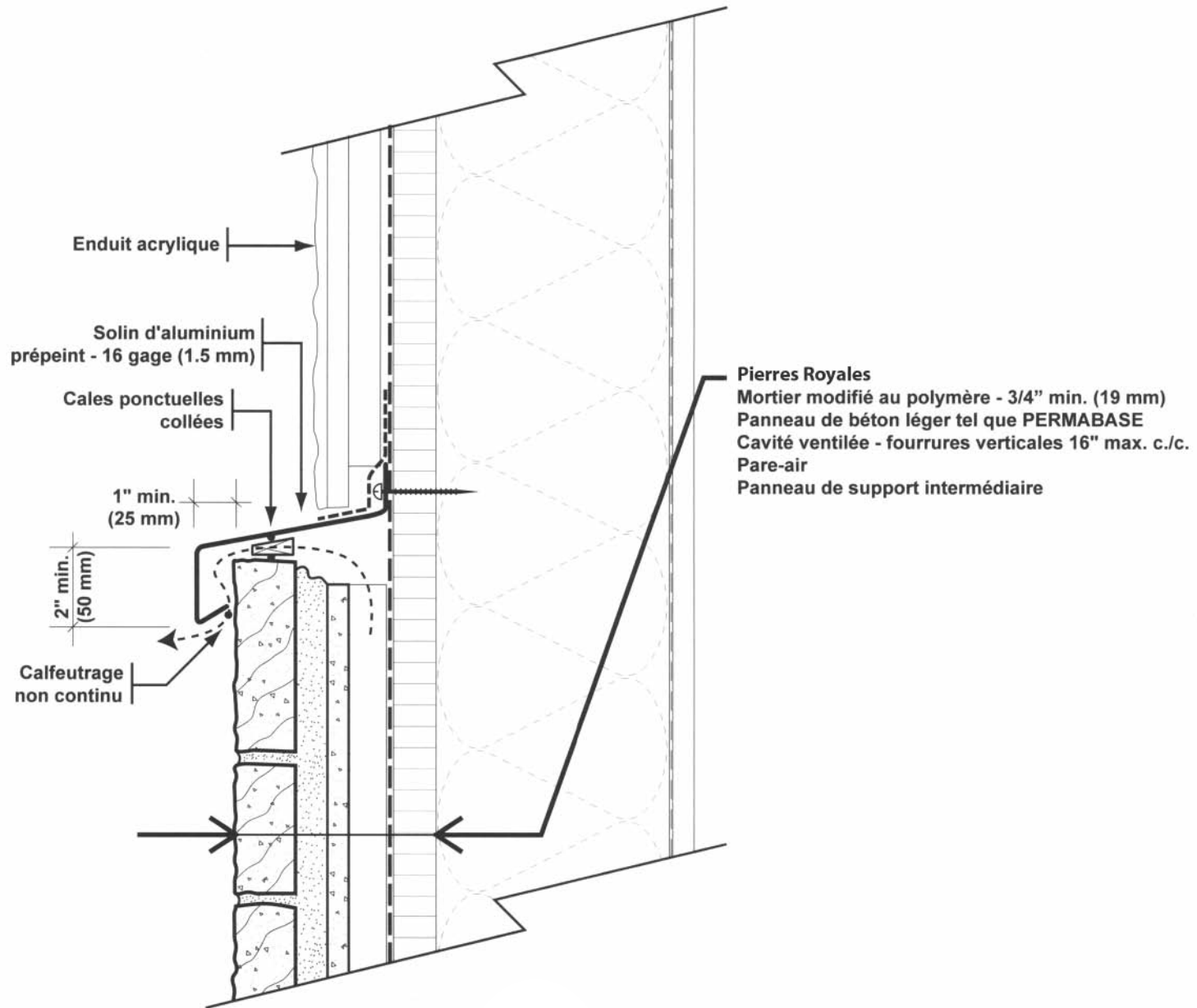
# JONCTION BALCON - SOLIN D'ALUMINIUM



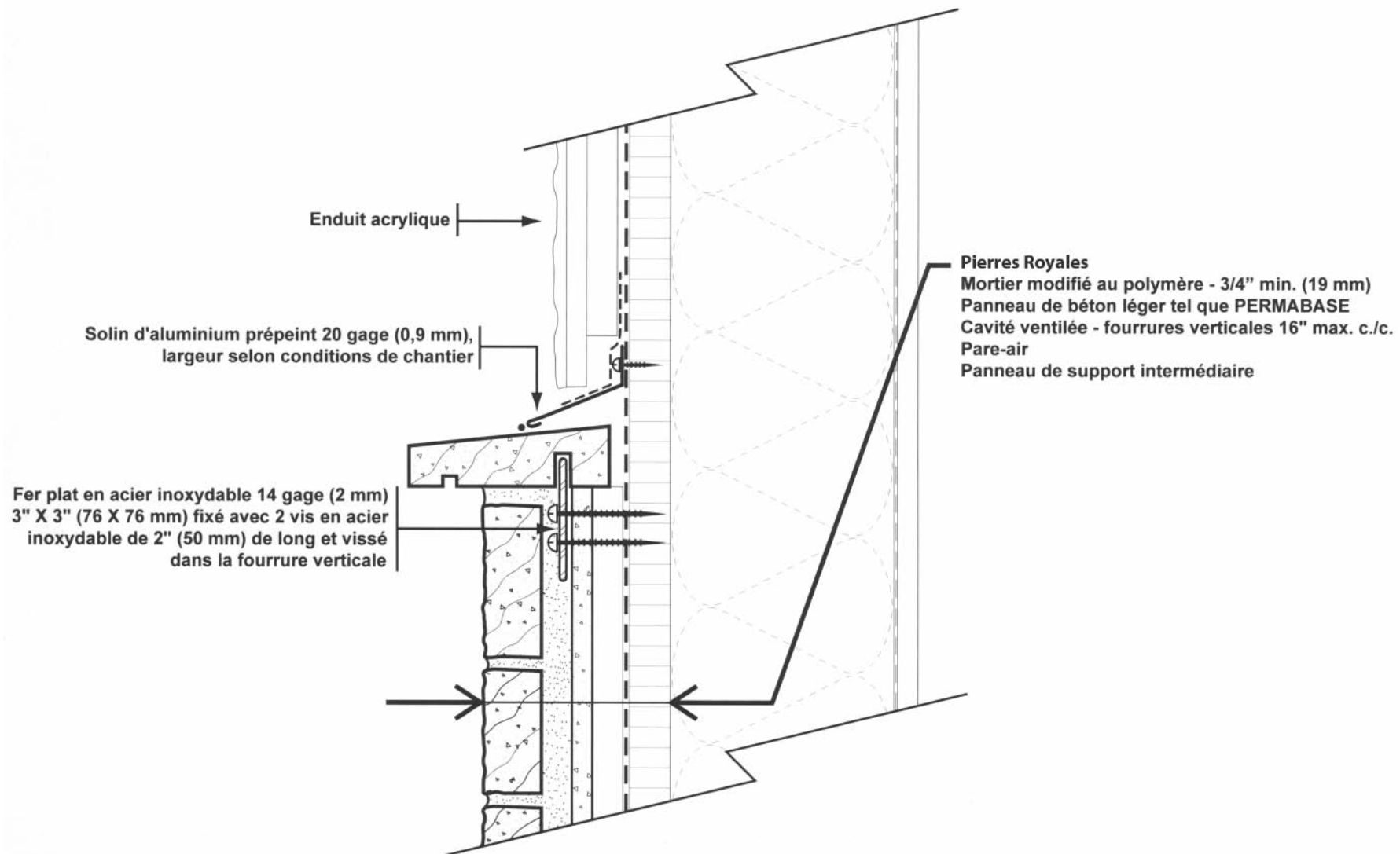
# JONCTION CHEMINÉE - TOITURE



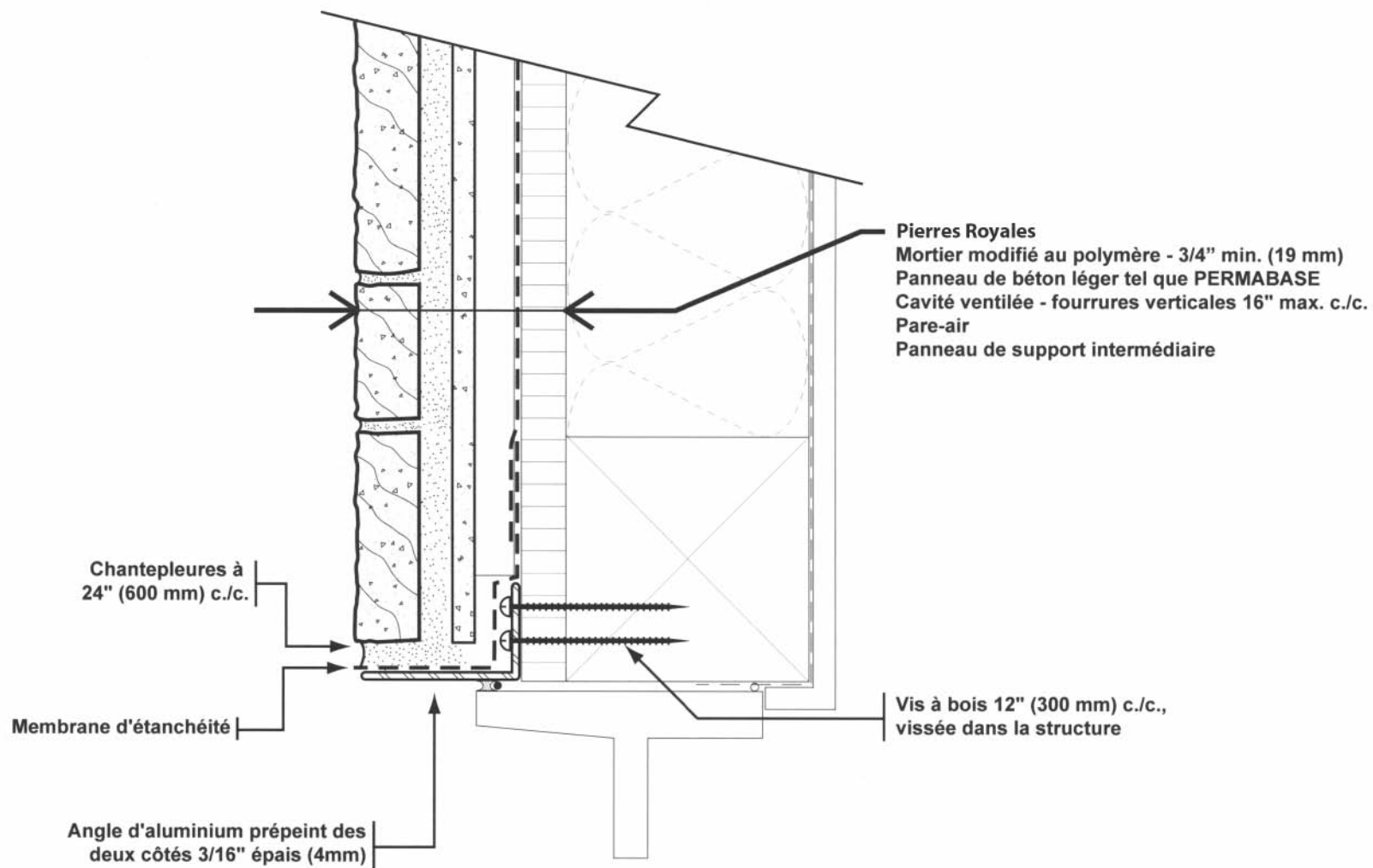
# JONCTION HORIZONTALE - SOLIN D'ALUMINIUM



# JONCTION HORIZONTALE - SOLIN DE PIERRE 5"



# TÊTE DE FENÊTRE - OPTION A



# TÊTE DE FENÊTRE - OPTION B

